

D-M-E Standard Button Mold Pressure Sensors

BS-412C 500 Pounds Force
BS-413C 2000 Pounds Force

Both Models Available in 12, 24 and 36 inch lengths

D-M-E Button Mold Pressure Sensors are used for measuring pressures in conjunction with auxiliary recording and control equipment in injection, die cast and transfer molds. They provide a full-scale output of 2 millivolts per volt of excitation.

Two Models

Available in 500 and 2000 pounds force.

Hermetically Sealed

Allows sensor to be used where moisture is present.

Permanently Installed

Minimizes damage due to mishandling of sensors.

Temperature Compensated

Special amplifiers that compensate for temperature changes are avoided.

Constant Output

Because each sensor is electrically identical, each sensor has the same output. This similarity practically eliminates the need to recalibrate the readout system when sensors are exchanged. Only a slight readjustment of the zero setting of the readout system may be required when exchanging sensors. Therefore errors in calibration are non-existent and operators will spend less time setting up control systems and recorders.

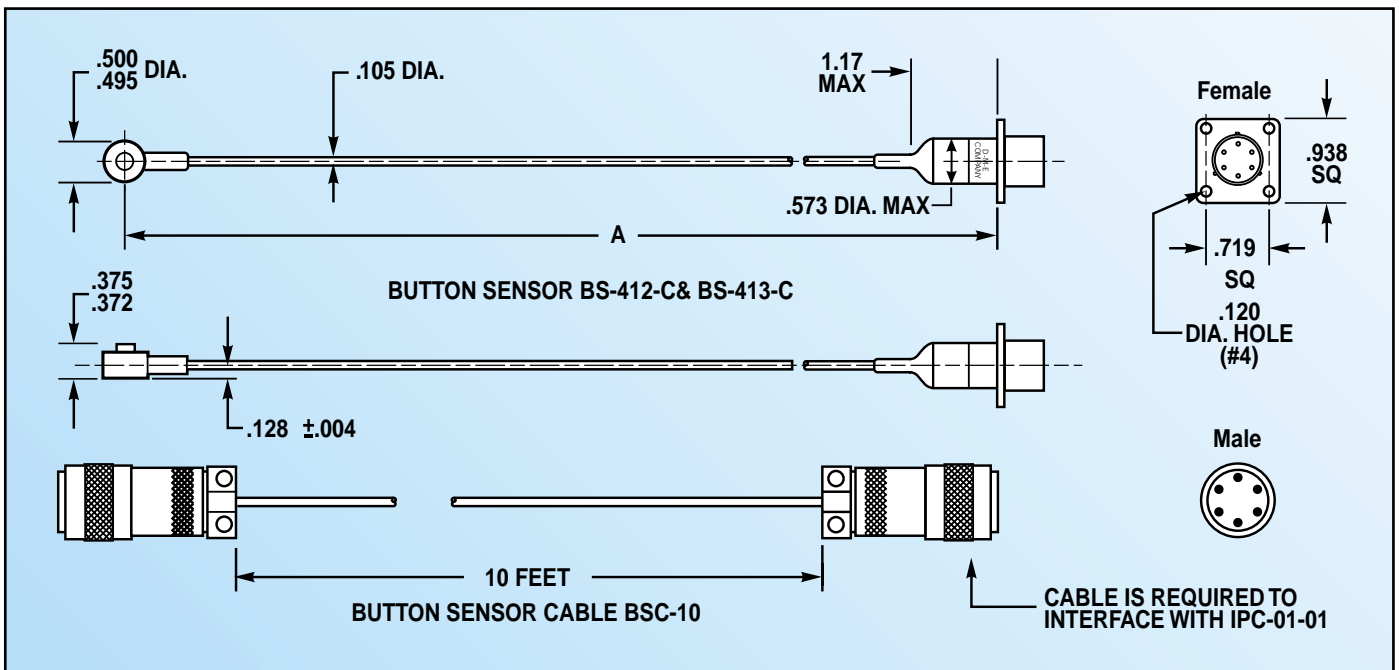
Small Size

Suitable for small molds or molds where water lines, support pillars, etc., inhibit the use of slide sensors.

Installation

The Button Sensor is usually installed under a 1/16 to 1/2 inch diameter ejector pin and the shielded lead wire is run to the outside of the mold for mounting. To accommodate the button sensor, a slot and counterbored hole is machined into the ejector plate. See installation information for details.

NIST TRACEABLE
 SUPPLIED WITH CERTIFICATE
 OF CALIBRATION



BUTTON MOLD PRESSURE SENSORS

Supplied with soldered on flush mount connector Burndy BT02A-10-6S (Mating connector Burndy BT06AC-10-6P not supplied).

| FOURCE POUNDS | MEASURES PRESSURE ON PINS FROM: | A LENGTH | | |
|---------------|----------------------------------|------------|------------|------------|
| | | 12"LEADS | 24"LEADS | 36"LEADS |
| 500 | 1/16 Thru 3/16 (2 Thru 6mm) dia. | BS-412C-12 | BS-412C-24 | BS-412C-36 |
| 2000 | 3/16 Thru 1/2 (6 Thru 16mm) dia. | BS-413C-12 | BS-413C-24 | BS-413C-36 |

BUTTON SENSOR EX TENSION CABLE*

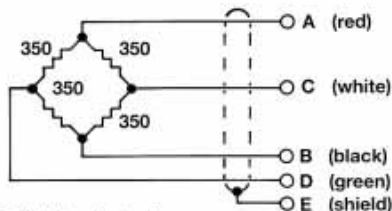
| CATALOG NUMBER | LENGTH |
|----------------|---------|
| BSC-10 | 10 FEET |

* Mates with connector on button sensors above. Burndy Connector No. BT06AC-10-6P on each end. Use where required for monitoring and control equipment.

D-M-E Standard Button Mold Pressure Sensors

BS-412C AND 413C

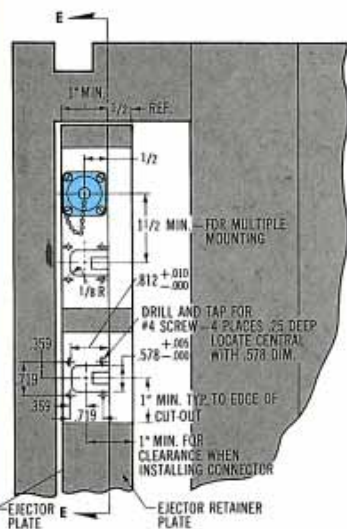
WIRING INFORMATION



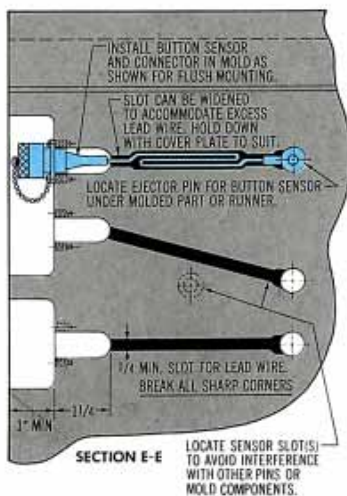
- + POWER A (red)
- POWER B (black)
- + SIGNAL C (white)
- SIGNAL D (green)
- GROUND E (shield)

WARNING:
DO NOT REMOVE CONNECTOR FROM SENSOR CABLE. CALIBRATION WILL BE ALTERED.

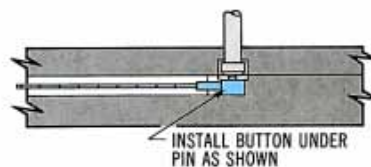
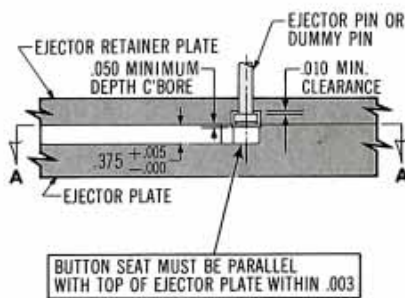
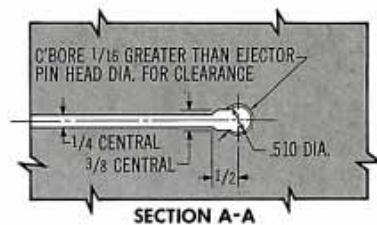
INSTALLATION INFORMATION FLUSH MOUNTED CONNECTOR



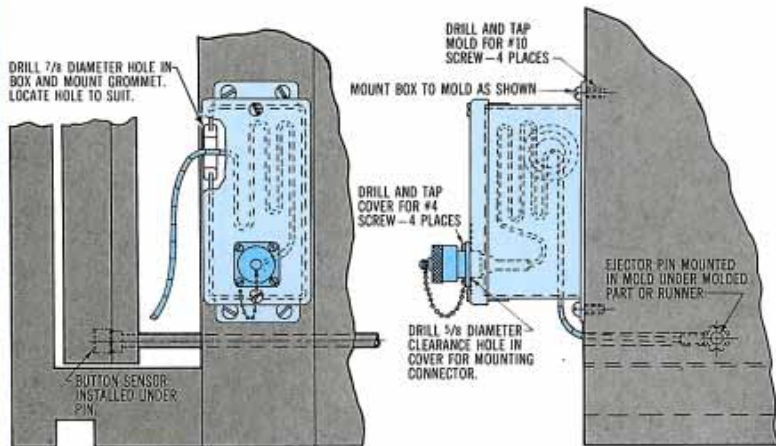
NOTE: WHEN EJECTOR PLATE IS THICKER THAN 1" CONNECTOR MAY BE CENTERED ON PLATE THICKNESS, ALTERING MOUNTING DIMENSIONS AS REQUIRED. SLOT FOR LEAD WIRE SHOULD BE DEEPENED AS IT APPROACHES CONNECTOR END AS REQUIRED.



NOTE: WHEN DUMMY PIN INSTALLATION IS MADE, ALTER MOUNTING DIMENSIONS AND LOCATION AS REQUIRED.



OUTSIDE BOX MOUNTED



NOTE: WHEN INSTALLING BUTTON SENSOR IN MOLD, PASS BUTTON THROUGH HOLE IN COVER AND

HOLE IN BOX BEFORE INCORPORATING INTO MOLD UNDER PIN. EXCESS WIRE MAY BE LEFT IN BOX.

SPECIFICATIONS

| | | |
|--|------|-----|
| PRESSURE MEASUREMENT RANGE . . . 0 to 20,000 psi (FOR RECOMMENDED PIN DIAMETERS) | | |
| FORCE RANGE | lb. | kg. |
| CAT. NO. BS-412C | 500 | 225 |
| CAT. NO. BS-413C | 2000 | 900 |
| MAXIMUM LOAD 150% FULL SCALE | | |
| TEMPERATURE RANGE 0°F TO 450°F | | |
| TEMPERATURE COMPENSATION . . . 2% FULL SCALE | | |
| INPUT 12V MAX. | | |
| OUTPUT 2.0 mV/V FULL SCALE | | |
| ACCURACY 3/4% FULL SCALE | | |
| REPEATABILITY 0.1% FULL RANGE OUTPUT | | |
| FULL RANGE DEFLECTION LESS THAN .0008" | | |
| CIRCUIT 4-ARM 350 OHM BRIDGE | | |
| CONNECTOR BURNDY BT02A-10-6S MATES WITH BURNDY BT06AC-10-6P | | |

NOTE: MATING CONNECTOR IS BURNDY BT06AC-10-6P. COMPATIBLE CONNECTORS ARE ALSO AVAILABLE FROM BENDIX, CANNON, SORIAU AND ACT.